

Things to Do in Victoria

Local Indoor Activities

1. [City Centre Park](#)

- a. Bowling
- b. Indoor and Outdoor Ice Skating
- c. Mini Golf



2. [Haunted Manor Mini-Golf + Ping Pong Lounge](#)

- a. Putt your way through an 18-hole course set in a haunted manor



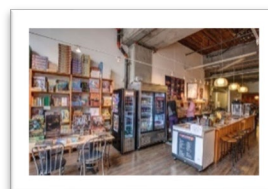
3. [Royal BC Museum](#)

- a. Founded in 1886 and has many exhibitions to explore
- b. The IMAX theatre is also located in the museum with daily and nightly showings.



4. [Board Game Cafés](#)

- a. Two different board game cafes in Victoria
 - i. [Board With Friends](#)
 - ii. [Interactivity Board Game Cafe](#)
- b. Hundreds of different games to play



5. [Victoria Royals Hockey Games](#)

- a. Games take place at Save-On-Foods Memorial Arena



6. [Iron & Wood Golf Simulators](#)

- a. Golf Simulators,
- b. Multisport Simulators: "Zombie Dodgeball," basketball, carnival games, hockey and many others



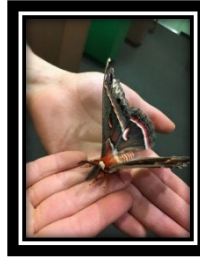
7. [Miniature World](#)

- a. Over 85 exciting miniature dioramas and displays. Rated in the Top 3 places to see in Victoria (2018).
- b. No reservations. First-come first-serve basis. Tickets can be purchased online.



8. [Victoria Bug Zoo](#)

- a. Excellent opportunity to view and experience live tropical bugs from around the world.
Has been open in Victoria since 1997.

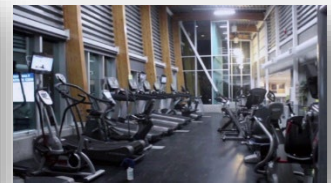


9. **Recreation Centres**

- a. Swimming
b. Gym
c. Ice-skating
d. Various programs

Various Locations

- [Saanich Recreations Centers](#)
- [Esquimalt Recreation Center](#)
- [Oak Bay Recreation Centers](#)
- [Victoria Recreation Centers](#)
- [YMCA Centers](#)



10. [Escape Rooms](#)

- a. Participants solve a series of puzzles and riddles to figure out how to escape from a locked adventure room.

<https://www.victoriaescapegames.com/>



11. [Butterfly Gardens](#)

- a. Thousands of tropical butterflies (up to 70 species)



Local Outdoor Attractions

1. [Fort Rod Hill](#)

- a. Free for youth under 18. \$6.90 per adult. Only open on weekends from 10AM-4PM.
- b. Great place to wander around the historic artillery fortress and see the Fisgard Lighthouse.



2. [Hatley Castle](#)

- a. Beautiful castle that was built in 1908. Used as a military college for many years. The movie Dead Pool had portions of their filming done at this location
- b. Great outdoor park to explore. Royal Roads University is located here as well.



3. [Esquimalt Lagoon](#)

- a. Features miles of breathtaking ocean beachfront with a view across to the city of Victoria at one end and the amazing snowcapped peaks of the Olympic Mountains at the other.



4. [Macaulay Point/Fleming Beach](#)

- a. A hidden gem of a park that even most locals don't know about. Beautiful views of the ocean and Olympic mountains, along with a great little beach (Fleming Beach) and some neat old military ramparts to wander through.



Local Day Trips

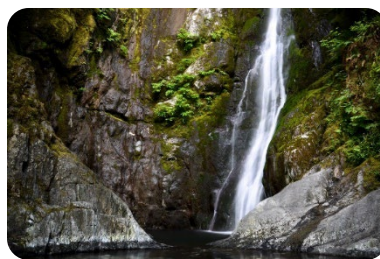
1. [Sidney, BC](#)

- a. The picturesque town of Sidney by the Sea is situated within the traditional territory of the W̱SÁNEĆ People on the southern tip of Vancouver Island
- b. Walk along pier and see people fishing and crabbing. Be careful of seagulls who might steal your food!
- c. Visit the [Shaw Centre for the Salish Sea](#)
- d. Visit the Lego Exhibition at The Sidney Museum and Archives - 2423 Beacon Ave.



2. [Goldstream Provincial Park](#)

- a. Hotdog/marshmallow roast (would need to be with host family) they have 4 or so fire pits and picnic tables. These are at the day use area.
- b. Camping (would need to be with host family)
- c. Hiking
- d. Waterfalls



3. Local Walks/Hiking

- a. Songhees West Song Walkway
- b. Rockland Walk
- c. Dallas Road
- d. Fisherman's Wharf
- e. Ogden Point Breakwater
- f. Gorge Waterway
- g. Cattle Point
- h. Mt Tolmie
- i. Mt Douglas
- j. Swan Lake



4. **[Malahat Skywalk](#)**

- a. Accessible 600m walk through the trees to a spectacular spiral ramp that takes you up to a sightseeing lookout
- b. For more information and fee schedule: <https://malahatskywalk.com/>



5. **[Blenkinsop Golf](#)**

- a. Mini Golf – open seasonally – check hours before you go
- b. Driving Range